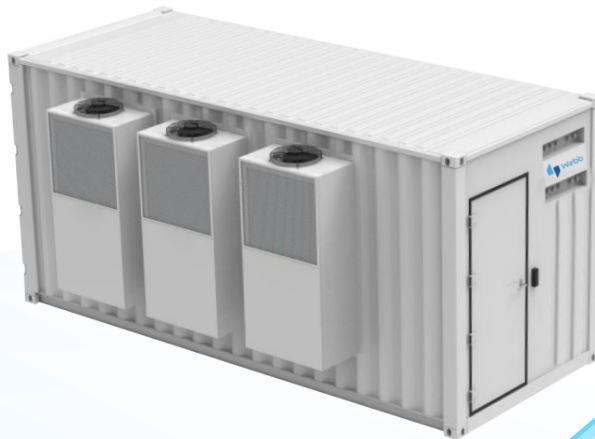




Micro Data Center Solutions



DATA SHEET

+44 20 7193 3422
info@webbinfra.com
www.webbinfra.com



Micro Data Center Solutions

Webb offers revolutionary data management solutions with our innovative indoor, outdoor, and container micro data centres. Our indoor micro data centres seamlessly integrate into workspaces, providing flexible and efficient solutions. Outdoor micro data centres thrive in diverse environments, offering robust data management for outdoor applications. The containerized micro datacenters are ideal for rapid deployment and provide unparalleled mobility and scalability in remote locations or for organizations with dynamic data requirements.

Indoor Micro Data Center Racks

Fully integrated indoor rack solutions, featuring UPS power, batteries, cooling, monitoring, security, and fire suppression systems. Available in configurations ranging from half-rack to multiple racks for flexible deployment options.



Outdoor Micro Data Center Racks

Fully integrated with outdoor cabinets, UPS/DC power, battery, cooling, monitoring, security, and fire systems. Available with multiple cabinets all in one solution.

Containerized Racks

Fully integrated with ISO container, cabinet, UPS/DC power, battery, cooling, monitoring, security, and fire systems. Available in multiple sizes.



**Specifications are subject to change without notice based on technical recommendations and related product enhancements*

Indoor Micro Data Center Racks

Micro Data Center with Premium Cooling

3kW - 6kW Micro data center fully integrated with closed rack, package cooling, UPS, battery, power distribution, security, monitoring and fire systems. No complex piping or remote condenser installation.

Micro Data Center with Row Cooling

5kW - 10kW Micro data center fully integrated with closed rack, package cooling, UPS, battery, power distribution, security, monitoring and fire systems. No complex piping or remote condenser installation.

Micro Data Center with Rack Split Cooling

3kW - 10kW Micro data center fully integrated with closed rack, rack mount cooling, UPS, battery, power distribution, security, monitoring and fire systems. Modular rack cooling flexible for rack oriented MDC plan, expansion and deployment.

Micro Data Center with Row and Split Cooling

6kW - 20kW Micro data center fully integrated with closed rack, split cooling, UPS, battery, power distribution, security, monitoring and fire systems. Row cooling seamless integration with rack row and capacity expansion.



Micro data center with premium cooling



Micro data center with row cooling



Micro data center with rack split cooling



Micro data center with row and split cooling

**Specifications are subject to change without notice based on technical recommendations and related product enhancements*

Key Features

- Rack level cooling, cold and hot aisle isolation, and PUE values as low as 1.3
- Fully enclosed design, dust and noise reduction, IP rating up to IP55
- Cabinets are covered with insulating material to prevent condensation
- The cabinets are equipped with a standard emergency pop up door system, which can automatically open the front and rear doors in the event of a fire or when sensors detect extreme temperatures
- Supports remote access via web, app, and centralised monitoring, with compatibility for monitoring protocols such as Modbus TCP, SNMPv1/v2, and BACnet.



**Specifications are subject to change without notice based on technical recommendations and related product enhancements*

Technical Specifications

Part number	T.MDC.ND.2.0.FX	T.MDC.ND.2.4.PX	T.MDC.ND.3.0.PX	T.MDC.ND.3.5.PX	T.MDC.ND.3.5.SX	T.MDC.ND.5.0.SX	T.MDC.ND.5.0.PX	T.MDC.ND.7.0.SX	T.MDC.ND.7.0.PX
Available space for IT - U	18U	19U	26U	27U	29U	35U	35U	35U	35U
Available power for IT -kW	2.0	2.4	3.0	3.5	3.5	5.0	5.0	7.0	7.0
Redundancy	N	N	N	N	N	N	N	N	N
Width -mm	600	600	600	600	600	900	900	900	900
Depth -mm	1100	1100	1100	1400	1400	1400	1400	1400	1400
Height -mm	1200	1590	2000	2000	2000	2000	2000	2000	2000
Weight -kg	166	180	310	362	352	501	511	505	515
IP level	IP5X	IP5X	IP5X	IP5X	IP5X	IP5X	IP5X	IP5X	IP5X
Input power	220-240V/1P/50Hz	220-240V/1P/50Hz	220-240V/1P/50Hz	220-240V/1P/50Hz	220-240V/1P/50Hz	220-240V/1P/50Hz	220-240V/1P/50Hz	220-240V/1P/50Hz	220-240V/1P/50Hz
Recommended breaker	16A	32A	63A	63A	63A	63A	63A	63A	63A
Power Section									
UPS -kVA	3.0	3.0	6.0	6.0	6.0	6.0	6.0	10.0	10.0
UPS type	Rack	Rack	Rack	Rack	Rack	Rack	Rack	Rack	Rack
Standard battery	12V/9AH 6pcs	12V/9AH 6pcs	12V/9AH 16pcs	12V/9AH 16pcs	12V/9AH 16pcs	12V/9AH 16pcs	12V/9AH 16pcs	12V/9AH 16pcs	12V/9AH 16pcs
Surge protection	√	√	√	√	√	√	√	√	√
Power panel	√	√	√	√	√	√	√	√	√
PDU	Basic 8 slots	Basic 8 slots	Basic 16 slots	Basic 16 slots	Basic 16 slots	Basic 16 slots	Basic 16 slots	Basic 16 slots	Basic 16 slots
Cooling Section									
Cooling type	Fan ventilation	Packaged DX	Packaged DX	Packaged DX	Split DX	Split DX	Packaged DX	Split DX	Packaged DX
Mount type	Top	Top	Top	Rack	Rack	Row	Row	Row	Row
Capacity-kW	2.0	3.5	3.5	3.5	3.9	5.6	5.6	7.6	7.6
Emergency ventilation	√	√	√	√	√	√	√	√	√
DCIM Section									
Local display	Touchscreen	Touchscreen	Touchscreen	Touchscreen	Touchscreen	Touchscreen	Touchscreen	Touchscreen	Touchscreen
Remote access	Web access	Web access	Web access	Web access	Web access	Web access	Web access	Web access	Web access
Reporting protocol	Modbus-TCP	Modbus-TCP	Modbus-TCP	Modbus-TCP	Modbus-TCP	Modbus-TCP	Modbus-TCP	Modbus-TCP	Modbus-TCP
UPS Mgmt.	Yes	Yes	Yes	Yes	Yes	Yes	Yes	Yes	Yes
Cooling Mgmt.	Yes	Yes	Yes	Yes	Yes	Yes	Yes	Yes	Yes
Temperature humidity sensor	Yes	Yes	Yes	Yes	Yes	Yes	Yes	Yes	Yes
Fire/smoke sensor	Yes	Yes	Yes	Yes	Yes	Yes	Yes	Yes	Yes
Water sensor	Yes	Yes	Yes	Yes	Yes	Yes	Yes	Yes	Yes
Door sensor	Front/Rear	Front/Rear	Front/Rear	Front/Rear	Front/Rear	Front/Rear	Front/Rear	Front/Rear	Front/Rear
Security section									
Access control	RFID/Finger/PIN	RFID/Finger/PIN	RFID/Finger/PIN	RFID/Finger/PIN	RFID/Finger/PIN	RFID/Finger/PIN	RFID/Finger/PIN	RFID/Finger/PIN	RFID/Finger/PIN
Video access	Optional	Optional	Optional	Optional	Optional	Optional	Optional	Optional	Optional
Fire fighting section									
Fire extinguisher	NOVEC (Optional)	NOVEC (Optional)	NOVEC (Optional)	NOVEC (Optional)	NOVEC (Optional)	NOVEC (Optional)	NOVEC (Optional)	NOVEC (Optional)	NOVEC (Optional)
Early detection	Vesda (Optional)	Vesda (Optional)	Vesda (Optional)	Vesda (Optional)	Vesda (Optional)	Vesda (Optional)	Vesda (Optional)	Vesda (Optional)	Vesda (Optional)

*Specifications are subject to change without notice based on technical recommendations and related product enhancements

Indoor Micro Data Center Row Series

Closed Aisle System

Independent cold / hot closed aisle are integrated at the front and rear of the cabinet, respectively.

Monitoring System

All in one monitoring system collects, displays and reports system status, locally and remotely.

Security System

3 in 1 access control system (Pin/Fingerprint/RFID) and video monitoring system.



Power Distribution

Rack mount power distribution, metering, and management for all the power lines.

Power System

48VDC power, or 3kVA – 200kVA rack mount or modular UPS system protect power continuity.

Cooling System

2.5kW – 90kW rack / row mount precision cooling, seamlessly matched to the rack.

Server Rack

Standard 19-inch server cabinet, glass front door, sheet metal back door

**Specifications are subject to change without notice based on technical recommendations and related product enhancements*

Technical Specifications

Part number	Configure to order
Available space for IT- U	<= 10 x 42U
Available power for IT- kW	<= 15kW/Rack
Redundancy	N / N+1 / 2N
Width -mm	As per requirement
Depth -mm	1400/1200(Optional)
Height -mm	2000
Weight -kg	As per requirement
IP level	IP5X / IP55(Optional)
Input power	220-240V/1P/50-60Hz or 380-415V/3P/50-60Hz
Recommended breaker	As per requirement
Power section	
UPS -kVA	3kVA -200kVA
UPS type	Rack / Modular
Standard battery	<= 4hours backup time
PDU	Basic / Smart(Optional)
Cooling section	
Cooling type	Packaged DX / Split DX / Chilled water
Mount type	Row / Rack / Top
Capacity-kW	3.9-90kW
Emergency ventilation	√
DCIM Section	
Local display	TouchScreen
Remote access	Web Access / Email / SMS(Optional)
Reporting protocol	Modbus-TCP / SNMP(Optional)
UPS Mgmt.	Yes
Cooling Mgmt.	Yes
Temperature humidity sensor	Yes
Fire/smoke sensor	Yes
Water sensor	Yes
Door sensor	Front / Rear
Security section	
Access control	RFID / Finger / PIN
Video access	Optional
Fire fighting section	
Fire extinguisher	NOVEC (Optional)
Early detection	Vesda(Optional)

*Specifications are subject to change without notice based on technical recommendations and related product enhancements

Containerized Rack Series

Fire System

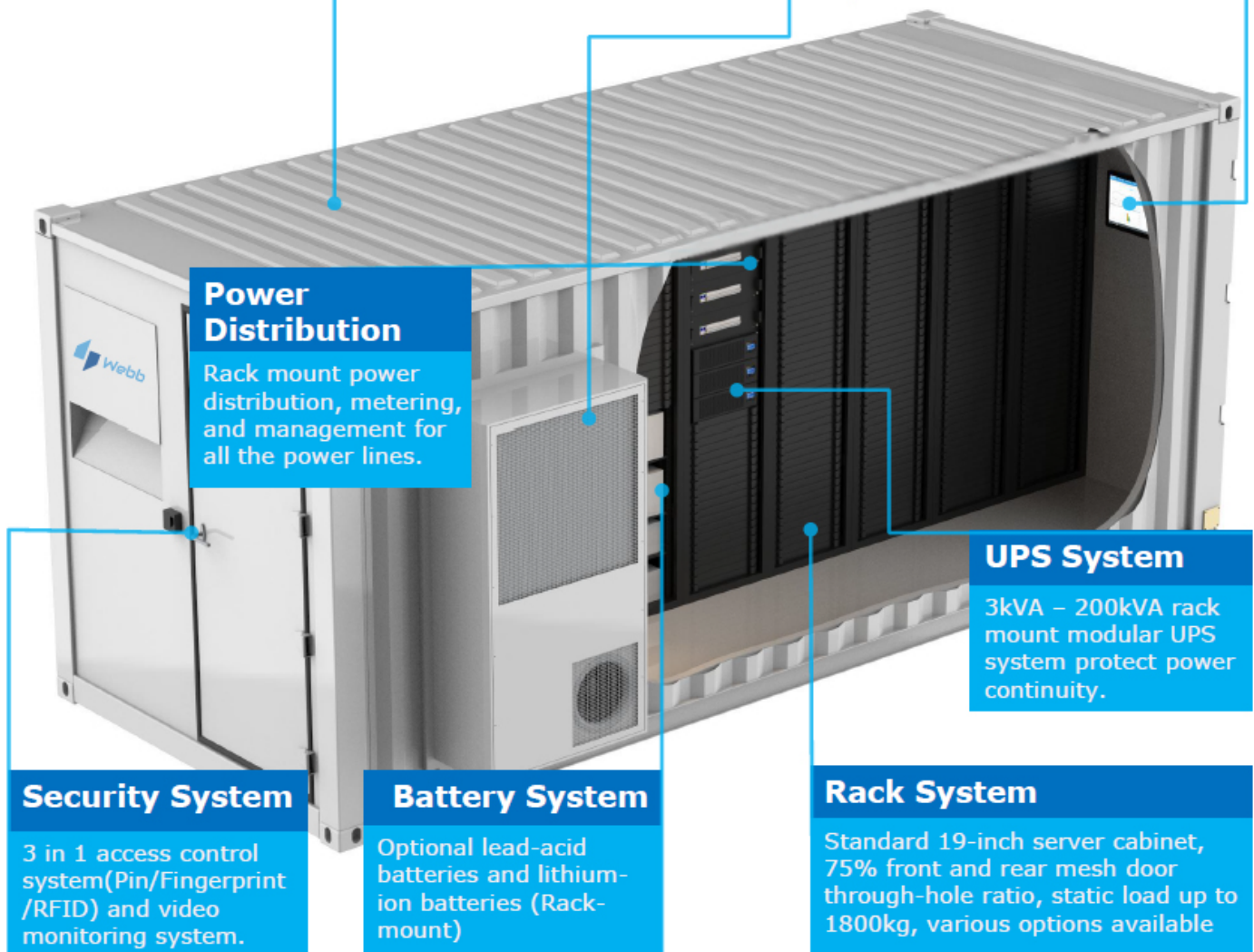
Fire extinguisher and early detection system.

Cooling System

2.5kW – 40kW precision cooling in rack mount, top mount and row mount type.

Monitoring System

All in one monitoring system collects, displays and reports system status, locally and remotely.



Power Distribution

Rack mount power distribution, metering, and management for all the power lines.

UPS System

3kVA – 200kVA rack mount modular UPS system protect power continuity.

Security System

3 in 1 access control system (Pin/Fingerprint /RFID) and video monitoring system.

Battery System

Optional lead-acid batteries and lithium-ion batteries (Rack-mount)

Rack System

Standard 19-inch server cabinet, 75% front and rear mesh door through-hole ratio, static load up to 1800kg, various options available

**Specifications are subject to change without notice based on technical recommendations and related product enhancements*

Container Data Center

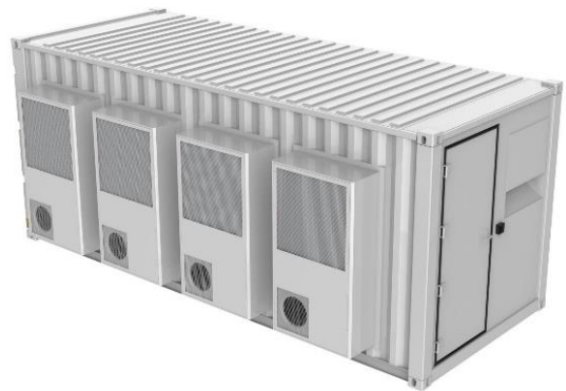
Webb Containerized rack series include single and dual container data centres. They are all-in-one micro data centres fully integrated with standard racks, wall mounted cooling systems, AC/DC power, batteries, power distribution, security, and monitoring fire systems. They are IP55-protected and thermally insulated for global deployment.

Options include: 10F Container data centre, 20F Container data centre, 40F Container data centre and Dual container data centres which are assembled from 2 or more containers.

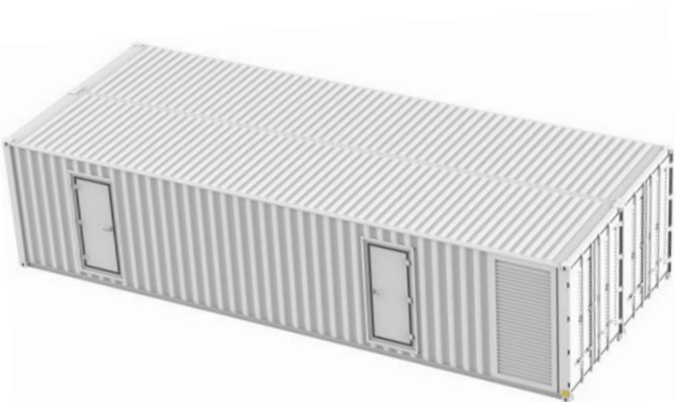
Ambient temperature: -35°C to +55°C



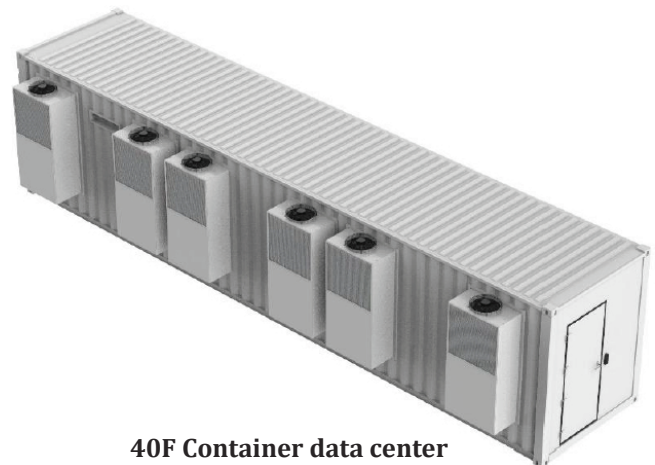
10F Container data center



20F Container data center



Dual container data center



40F Container data center

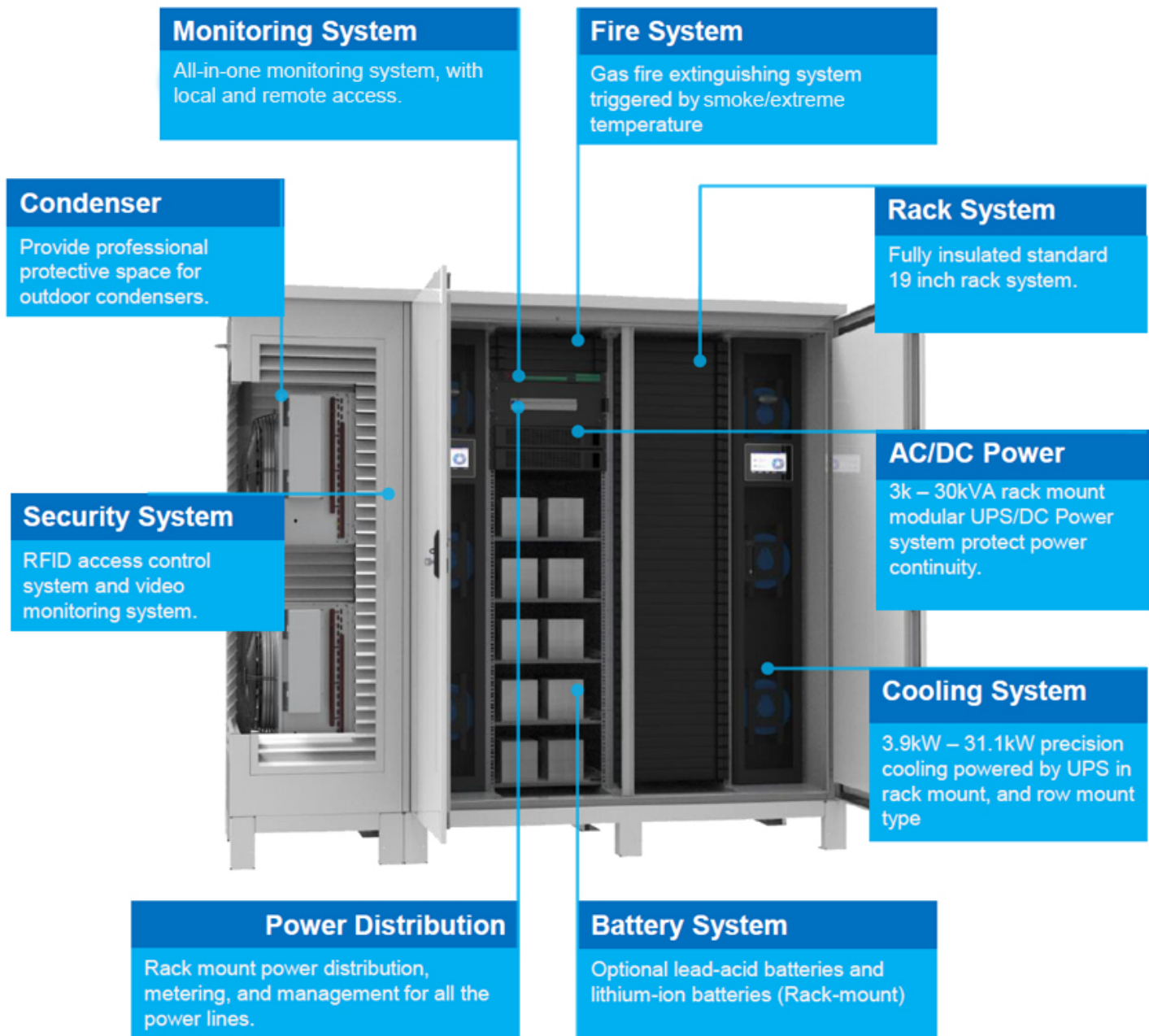
**Specifications are subject to change without notice based on technical recommendations and related product enhancements*

Technical Specifications

Part number	T.CDC.02.2x12.5.PX	T.CDC.02.2x21.2.PX	T.CDC.06.3x17.5.PX	T.CDC.06.4x21.2.PX	T.CDC.16.5x21.2.PX	T.CDC.14.8x21.2.PX	T.CDC.32.10x21.2.PX	T.CDC.30.18x21.2.PX	Configure to order
IT Rack no.	2	2	6	6	16	14	32	30	As per requirement
Power density - kW/rack	5.0	10.0	5.0	10.0	5.0	10.0	5.0	10.0	As per requirement
Redundancy	N+1	N+1	N+1	N+1	N+1	N+1	N+1	N+1	N/N+1/2N
Width - mm	2438	2438	2438	2438	2438	2438	4876	4876	As per requirement
Depth - mm	2991	2991	6058	6058	12192	12192	12192	12192	As per requirement
Height - mm	2896	2896	2896	2896	2896	2896	2896	2896	As per requirement
Weight - kg	4170	4400	8135	8755	16475	17845	32380	36000	As per requirement
IP level	IP55	IP55	IP55	IP55	IP55	IP55	IP55	IP55	IP55
Input power	380-415V/3P /50-60Hz	380-415V/3P /50-60Hz	380-415V/3P /50-60Hz	380-415V/3P /50-60Hz	380-415V/3P /50-60Hz	380-415V/3P /50-60Hz	380-415V/3P /50-60Hz	380-415V/3P /50-60Hz	As per requirement
Power section									
UPS -kVA	2 x 10	3 x 10	3 x 15	5 x 15	5 x 25	7 x 25	8 x 25	8 x 50	3 – 500kVA
UPS mount type	Rack	Rack	Rack-modular	Rack-modular	Rack-modular	Rack-modular	Rack-modular	Floor-modular	Rack/Floor
Standard UPS battery	15min @10kW	15min @20kW	15min @30kW	15min @60kW	15min @80kW	15min @140kW	15min @160kW	15min @300kW	<= 4 hour
AC PDU	Smart/Basic PDU	Smart/Basic PDU	Smart/Basic PDU	Smart/Basic PDU	Smart/Basic PDU	Smart/Basic PDU	Smart/Basic PDU	Smart/Basic PDU	As per requirement
-48VDC -A	Optional	Optional	Optional	Optional	Optional	Optional	Optional	Optional	10 – 600A
Standard 48VDC battery	Optional	Optional	Optional	Optional	Optional	Optional	Optional	Optional	<= 4 hour
48VDC power distribution	Optional	Optional	Optional	Optional	Optional	Optional	Optional	Optional	As per requirement
Cooling section									
Cooling type	Packaged DX	Packaged DX	Packaged DX	Packaged DX	Packaged DX	Packaged DX	Packaged DX	Packaged DX	Packaged DX/ Split
Mount type	Wall	Wall	Wall	Wall	Wall	Wall	Wall	Wall	Row/Room/ Wall
Capacity- kW	2 x 12.5	2 x 21.2	3 x 17.5	4 x 21.2	5 x 21.2	8 x 21.2	10 x 21.2	18 x 21.2	1.5 – 200.0kW
DCIM section									
Local display	Touchscreen	Touchscreen	Touchscreen	Touchscreen	Touchscreen	Touchscreen	Touchscreen	Touchscreen	Touchscreen
Remote access	Web access	Web access	Web access	Web access	Web access	Web access	Web access	Web access	Web access
Reporting protocol	Modbus/SN MP	Modbus/SN MP	Modbus/SN MP	Modbus/SN MP	Modbus/SN MP	Modbus/SN MP	Modbus/SN MP	Modbus/SN MP	Modbus/SN MP
UPS Mgmt.	Yes	Yes	Yes	Yes	Yes	Yes	Yes	Yes	Yes
Cooling Mgmt.	Yes	Yes	Yes	Yes	Yes	Yes	Yes	Yes	Yes
Temperature humidity sensor	Yes	Yes	Yes	Yes	Yes	Yes	Yes	Yes	Yes
Fire/smoke sensor	Yes	Yes	Yes	Yes	Yes	Yes	Yes	Yes	Yes
Water sensor	Yes	Yes	Yes	Yes	Yes	Yes	Yes	Yes	Yes
Door sensor	Yes	Yes	Yes	Yes	Yes	Yes	Yes	Yes	Yes
Security section									
Access control	RFID/Pin/ Finger	RFID/Pin/ Finger	RFID/Pin/ Finger	RFID/Pin/ Finger	RFID/Pin/ Finger	RFID/Pin/ Finger	RFID/Pin/ Finger	RFID/Pin/ Finger	RFID/Pin/ Finger
Video access	Yes	Yes	Yes	Yes	Yes	Yes	Yes	Yes	Yes
Fire fighting section									
Fire extinguisher	NOVEC	NOVEC	NOVEC	NOVEC	NOVEC	NOVEC	NOVEC	NOVEC	NOVEC
Early detection	VESDA	VESDA	VESDA	VESDA	VESDA	VESDA	VESDA	VESDA	VESDA

*Specifications are subject to change without notice based on technical recommendations and related product enhancements

Outdoor Micro Data Center Rack Series



**Specifications are subject to change without notice based on technical recommendations and related product enhancements*

Single Rack Micro Data Center with Rack Cooling

Micro data center fully integrated with single rack space, rack cooling, AC/DC power, battery, power distribution, security, monitoring and fire systems. IP55 protection and thermal insulation for outdoor deployment. Operating temperature range: -35°C ~ +45°C ambient.

Dual Rack Micro Data Center with Rack Cooling

Micro data center fully integrated with dual rack space, rack cooling, AC/DC power, battery, power distribution, security, monitoring and fire systems. IP55 protection and thermal insulated for outdoor deployment. Operating temperature range: -35°C ~ +45°C ambient.

Dual Rack Micro Data Center with Row Cooling

Micro data center fully integrated with dual rack space, in row cooling, AC/DC power, battery, power distribution, security, monitoring and fire systems. IP55 protection and thermal insulated for outdoor deployment. Operating temperature range: -35°C ~ +45°C ambient.

Triple Rack Micro Data Center with Rack Cooling

Micro data center fully integrated with triple rack space, rack cooling, AC/DC power, battery, power distribution, security, monitoring and fire systems. IP55 protection and thermal insulated for outdoor deployment. Operating temperature range: -35°C ~ +45°C ambient.



Single rack micro data center with rack cooling



Dual rack micro data center with rack cooling



Dual rack micro data center with row cooling



Triple rack micro data center with rack cooling

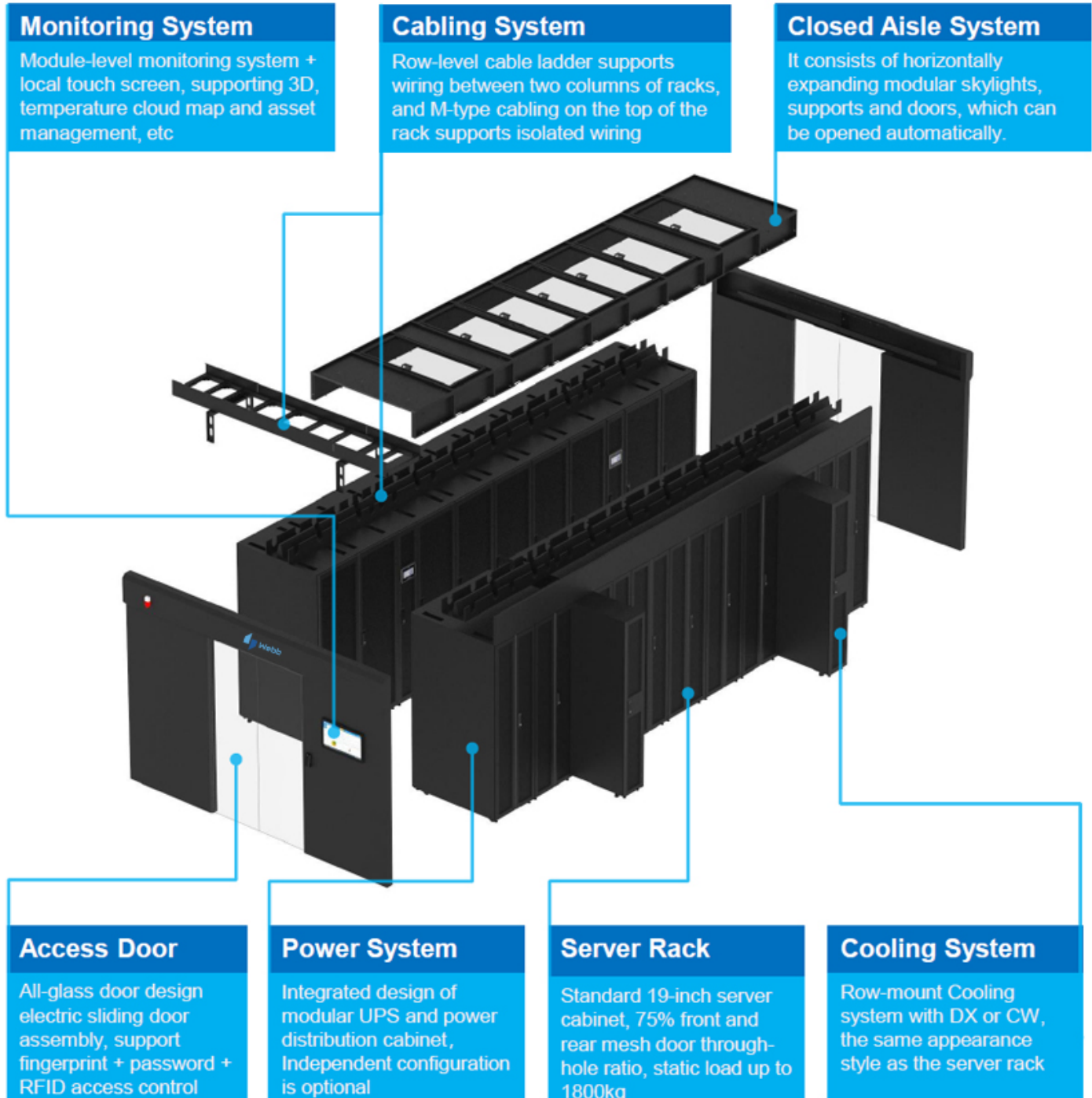
**Specifications are subject to change without notice based on technical recommendations and related product enhancements*

Technical Specifications

Part number	T.MDC.OD.1.3.PX	T.MDC.OD.3.5.SX	T.MDC.OD.5.0.SX	T.MDC.OD.7.0.SX	T.MDC.OD.12.0.SX	Configure to order
Available space for IT -U	33U	27U	67U	73U	101U	<= 3 x 42U
Available power for IT -kW	1.3	3.5	5.0	7.0	12.0	As per requirement
Redundancy	N	N	N	N	N	N / N+1 / 2N
Width -mm	905	1400	2000	2600	2600	<= 2600
Depth -mm	1080	1600	1600	1600	1600	1600
Height -mm	2105	2300	2300	2300	2300	2300
Weight -kg	165	560	890	1160	1242	As per requirement
IP level	IP55	IP55	IP55	IP55	IP55	IP55
Input power	220-240V/1P/50Hz	220-240V/1P/50Hz	220-240V/1P/50Hz	220-240V/1P/50Hz	380-415V/3P/50Hz	As per requirement
Recommended breaker	32A 1P	63A 1P	63A 1P	63A 1P	63A 3P	As per requirement
Power section						
UPS -kVA	Optional	6.0	10.0	10.0	20.0	3 -200kVA
UPS mount type	Optional	Rack	Rack	Rack	Rack	Rack
Standard UPS battery	Optional	2 x VRLA 12V/9AH 16Pcs	2 x VRLA 12V/9AH 16Pcs	2 x VRLA 12V/9AH 16Pcs	2 x VRLA 12V/9AH 40Pcs	<= 4 hour
AC PDU	1 x Basic 8 slots	1 x Basic 16 slots	2 x Basic 16 slots	2 x Basic 16 slots	3 x Basic 16 slots	As per requirement
-48VDC -A	2 x 30A	Optional	Optional	Optional	Optional	10 -600A
Standard 48VDC battery	Lithium 1 x 48V50AH	Optional	Optional	Optional	Optional	<= 4 hour
48VDC power distribution	BLVD 8 x 1P	Optional	Optional	Optional	Optional	As per requirement
Cooling section						
Cooling type	Packaged DX	Split DX	Split DX	Split DX	Split DX	Packaged / Split
Mount type	Wall	Rack	Rack	Row	Rack	Wall / Rack / Row
Capacity-kW	1.5	3.9	5.9	7.6	12.8	1.5 -90.0kW
DCIM section						
Local display	Touchscreen	Touchscreen	Touchscreen	Touchscreen	Touchscreen	Touchscreen
Remote access	Web access	Web access	Web access	Web access	Web access	Web access
Reporting protocol	Modbus-TCP	Modbus-TCP	Modbus-TCP	Modbus-TCP	Modbus-TCP	Modbus-TCP
UPS Mgmt.	Yes	Yes	Yes	Yes	Yes	Yes
Cooling Mgmt.	Yes	Yes	Yes	Yes	Yes	Yes
Temperature humidity sensor	Yes	Yes	Yes	Yes	Yes	Yes
Fire/smoke sensor	Yes	Yes	Yes	Yes	Yes	Yes
Water sensor	Yes	Yes	Yes	Yes	Yes	Yes
Door sensor	Front/Rear	Front/Rear	Front/Rear	Front/Rear	Front/Rear	Front/Rear
Security section						
Access control	RFID/Key	RFID/Key	RFID/Key	RFID/Key	RFID/Key	RFID/Key
Video access	Optional	Optional	Optional	Optional	Optional	Optional
Fire fighting section						
Fire extinguisher	NOVEC (Optional)	NOVEC (Optional)	NOVEC (Optional)	NOVEC (Optional)	NOVEC (Optional)	NOVEC (Optional)
Early detection	Vesda(Optional)	Vesda(Optional)	Vesda(Optional)	Vesda(Optional)	Vesda(Optional)	Vesda(Optional)

*Specifications are subject to change without notice based on technical recommendations and related product enhancements

Micro Data Center Modular Series



**Specifications are subject to change without notice based on technical recommendations and related product enhancements*

Technical Specifications

Part number	Configure to order
Available space for IT- U	<= 40 x 42U
Available power for IT- kW	<= 15kW/Rack
Redundancy	N / N+1 / 2N
Width -mm	As per user requirement
Depth -mm	1100 / 1200 Rack
Height -mm	2000
Weight -kg	As per user requirement
Input power	220-240V/1P/50-60Hz or 380-415V/3P/50-60Hz
Recommended breaker	As per user requirement
Power section	
UPS -kVA	3kVA -200kVA
UPS Type	Rack / Modular
Standard battery	<= 4hours backup time
PDU	Basic / Smart(Optional)
Cooling section	
Cooling type	Packaged DX / Split DX / Chilled water
Mount type	Row / Rack / Top
Capacity-kW	3.9-90kW
Emergency ventilation	√
DCIM section	
Local display	Touchscreen
Remote access	Web access / Email / SMS(Optional)
Reporting protocol	Modbus-TCP / SNMP(Optional)
UPS Mgmt.	Yes
Cooling Mgmt.	Yes
Temperature humidity sensor	Yes
Fire/smoke sensor	Yes
Water sensor	Yes
Door sensor	Front / Rear
Security section	
Access control	RFID / Finger / PIN
Video access	Optional
Fire fighting section	
Fire extinguisher	NOVEC(Optional)
Early detection	Vesda(Optional)

**Specifications are subject to change without notice based on technical recommendations and related product enhancements*